



INTERNATIONAL PUBLICATION OF THE ASSOCIATION OF WOMEN IN THE METAL INDUSTRIES | AUGUST 2024

GREETINGS FROM YOUR INTERNATIONAL PRESIDENT

KELLY JONES, AWWMI INTERNATIONAL PRESIDENT (DETROIT CHAPTER), MILL STEEL

I'm sure everyone is familiar with the proverb, "Give a man a fish, and you feed him for a day; teach a man to fish and you feed him for a lifetime." Mentoring and coaching are such important pieces in our personal success but sometimes we don't know we have resources available at our fingertips. One of the greatest benefits AWWMI can offer our membership is the opportunity for mentorship (mentee/mentor).

Whether you realize it or not, we've all been in a mentor/mentee relationship at one point or another. I used to think mentoring was something I needed to sign up for...when I was in a situation where I needed guidance figuring out a problem. I was too proud to raise my hand and ask for help; I wanted to figure it out on my own. I later learned that I've been mentored my entire life, one way or another and seeking out guidance is not a bad thing.

As a child, my ballet teacher would correct my posture week after week until I stood straight and perfected the positions, at least enough to satisfy her to move on to the next child to critique. As a soccer player, when someone was messing around and not taking practice seriously, my coach would make us run laps as a team. We would then reflect as a group why we ran when one person was responsible and what we would do differently to prevent that from happening in the future. Although informally, in one situation, I was individually mentored and in the other, I was mentored in a team setting. I learned from both.

As an adult, I have a network of people I rely on to talk through situations that help me grow and develop as a mother, partner, and employee. This network makes up my mentors (whether they realize it or not) and I have also learned that I have become a mentor to others as well. Sometimes we need an outside ear to talk through situations with and work on certain skills that will allow us to make solid decisions. The older I get, the more I realize how valuable these relationships are. If I could tell my 20-year-old self one thing, it would be to seek out mentorship earlier in my career. It would have made a lot of challenging situations easier to overcome.

Whether you are new to AWWMI or you're a veteran, if you haven't taken advantage of AWWMI's Mentoring program, please do! We offer both mentor and mentee relationship opportunities for short and long-term time frames. You can find more information on our website at <https://www.awmi.org/members-access/mentoring-corner/>.

If you've read my articles over the years, you'll know that I love referencing quotes, so I'll leave you with this one: "It's not what you are that is holding you back. It's what you think you are not."
-Anonymous



EXECUTIVE DIRECTOR'S MESSAGE

HALEY J. BRUST, EXECUTIVE DIRECTOR, TALLEY MANAGEMENT GROUP

I am thrilled to announce that AWMI has reached a significant milestone in our organization's history. Thanks to the unwavering support and dedication of our members AWMI has surpassed its membership numbers with over 1900 members. AWMI hasn't seen membership numbers like these since well before 2000 and it sure is wonderful!



This achievement is evidence of the amazing leadership at the International and Chapter levels and the value they provide in leading our organization. It reflects the hard work, commitment, and passion they bring to the table. From the Executive Board to our local Chapters, we are constantly searching for ways to bring value to our members and better serve their needs. AWMI leadership continually reviews our strategic plan to address the question of value: What value does AWMI provide and to whom? We have put a renewed focus on initiatives to promote the value of AWMI membership to our member companies and other organizations.

One value that is near to my heart is mentoring. It is essential to the growth and why AWMI has been so successful in recruiting and retaining members. Mentoring is a powerful tool for personal and career development. I am where I am today because of my first boss who became my mentor. She taught me so many valuable things and made me the executive director I am today. If you didn't know, AWMI has a wonderful mentoring program, which I encourage each and every one of you to be a part of. If you are new to AWMI, join to be mentored, if you are a season member, join to be a mentor. Being a mentee or mentor enriches everyone.

And if you didn't know Mentoring is one of AWMI's four cornerstones. Mentoring represents the organization's commitment to encouraging our members to thrive. It also creates networking, which is also one of our cornerstones!

I encourage each and every one of you to participate in our mentoring program and the best place to learn about our program is at our upcoming conference in November. We will be in Nashville, TN November 6 – 8. I hope to see you there!

MEMBERSHIP MINUTE

BECKY DOLAN, INTERNATIONAL MEMBERSHIP CHAIR (COLUMBUS CHAPTER), INFOSIGHT CORPORATION

How can it be summer already? Time flies. It just seemed like yesterday that our two oldest granddaughters were starting school, and both just graduated high school. Just like in AWMI, it seems like we just started the 2024 year, and we are already halfway through it.

Mentoring is one of our four cornerstones along with Networking. They go together. Every AWMI event offers opportunities for networking and for mentoring. When Networking at events, you do not know if that story you told or question you answered is going to help someone through a situation. Having a good Network gives you many opportunities to either Mentor or reach out to obtain a Mentor for yourself. Mentoring can be small gestures or large ones. They can be planned or spontaneous. You just never know.



I had the honor to attend two AWMI Mentoring events on Thursday, May 16th. The first one was a webinar hosted by AWMI's International Mentoring Chair, Shawna Livingston, discussing AWMI's Mentoring Program. Sian Marcone, one of our International Past Presidents and the past International Mentoring Chair was the moderator and Shawna had two pairs of Mentors and Mentees answer questions and talk about their experiences. It was highly informative and well done. Shawna will be posting the webinar to our website and will be sending out the link to our membership. You can visit our website at awmi.org for additional information on the program.

The second one was AWMI's Pittsburgh Chapter's Mentoring/Networking Event. Shannon Clark, AWMI's Northeast Regional Treasurer and Toronto's Co-Membership Chair was the speaker. As I mentioned, Mentoring and Networking go together. Shannon shared her experiences as a mentor and mentee along with giving pointers to build your network which eventually could lead to mentoring opportunities. A few of those pointers are make sure you follow-up with the people you meet at events; always smile; and do your best to use people's names in conversations.

A couple membership reminders:

1. How to Reset Your Login: Due to the sensitivity of the information, you should email headquarters directly at awmi@talley.com to reset your login. You need to include your name, current username, previous email, and new email (if you have a new one). Headquarters will then send you your username and a temporary password. You will need to reset your password as soon as you login for the first time with your current information. You should update your profile at this time. Please put in the subject line of your email: **AWMI Login Reset**. Please make sure that your current email is in your profile so that you do NOT miss any emails from headquarters.
2. Chapter Transfer: We know that members are always on the move. To transfer from one chapter to another, we request that you login into your account and update your full profile, specifically your chapter. Once you have updated your profile, you should then send an email to headquarters at awmi@talley.com and advise them of your chapter change. When headquarters sends out their bi-monthly member list to the chapters, you will be removed from your old chapter and added to your new chapter. Notifying headquarters will allow them to update the membership goal spreadsheet for our chapter boards. Please put in the subject line of your email to headquarters: **AWMI Member Chapter Transfer**.

The registration for the annual conference which will be held in Nashville in November 2024 has been sent out. Carol Chizmar, AWMI's International Conference Chair, and her team are planning a magnificent event!! See you there!



World-leading industrial gas company backed by people, plants and expertise

Gases and application technology for all phases of metals production—from mining to fabrication to recycling.



GENERATING A CLEANER FUTURE

(46405)

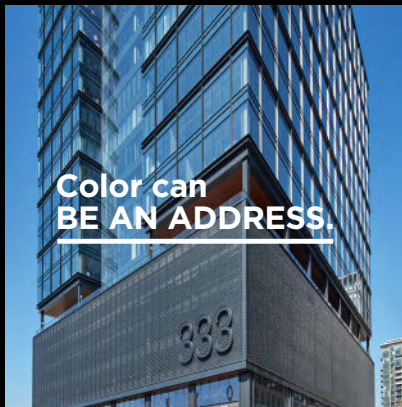
GERDAU

We help build communities by transforming recycled scrap metal into new, world-class steel products, with one of the industry's smallest carbon footprints.

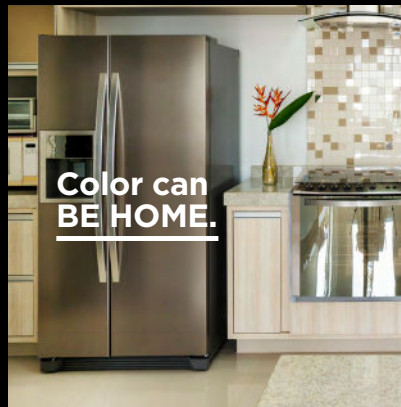
Gerdau is proud to grow with the communities where we work and live; supporting families, building careers, and shaping a better future.



SHAPE THE FUTURE WITH US



Color can BE AN ADDRESS.



Color can BE HOME.



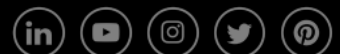
Color can DO ANYTHING.

Discover what color can do for you.

Color is more than a coating. It connects you with a memory, a feeling, an experience. Our metal coatings offer incredible design freedom for countless industries, applications and locations. **Learn more at coil.sherwin.com**

SHERWIN-WILLIAMS.
Coil Coatings

CONNECT WITH US



© 2024 The Sherwin-Williams Company

MARKETING NEWS

MARISSA MCMURRAY, INTERNATIONAL MARKETING CHAIR (PITTSBURGH CHAPTER), HATCH

AWMI is looking forward to participating in two conferences in the upcoming months!

The first one is CRU's SMU Steel Summit 2024 in Atlanta from August 26-28! The Steel Summit is America's premier steel conference and is the event to learn what the future holds. If you are attending, please stop by our **AWMI booth**! For more information, please visit [CRU SMU Steel Summit 2024](#).

The second is METALCON from October 30-November 1 also in Atlanta! For 30+ years, METALCON has been the only annual tradeshow devoted exclusively to the application of metal in construction and design. Please swing by the **AWMI booth #1903** if you are attending! For more information, please visit [METALCON 2024 Conference & Expo](#).



If you have not already done so, make sure you are following our AWMI Social Media pages!





SMU Steel Summit 2024

August 26-28, 2024 • Atlanta, USA
Georgia International Convention Center

The Premier Steel Conference in North America

"The SMU is the most important conference in the US, and it is the place to be for Industry updates, trends and networking."

Luis Canales, Regional Sales Manager, CSN LLC

1460+ attendees

500+ companies

"You won't meet so many business leaders and decision-makers anywhere else. In addition, there are highly interesting and topical presentations on all topics relating to steel and economic development."

Mark Georg, President / CEO, GEORG Group

Registration now open
www.smusteelsummit.com

For more information, contact:
Events@SteelMarketUpdate.com
#SMUSteel



METALCON

OCTOBER 30 - NOVEMBER 1

Georgia World Congress Center - Atlanta, Georgia

THE ONLY GLOBAL EVENT DEDICATED TO THE APPLICATION OF METAL IN CONSTRUCTION AND DESIGN



225+ EXHIBITORS SHOWCASING THE LATEST IN ROOFING, SOLAR, ACCESSORIES, FASTENERS, WALLS, FRAMING & MORE!

35+ INFORMATIVE AND PRACTICAL SESSIONS PRESENTED BY TOP INDUSTRY EXPERTS

"We come to METALCON to learn new ways to do old things. From talking to the people we buy machines from to the awesome education sessions, we always come away with great ideas to improve our business."

J. Waibel, T.T.&L. Sheet Metal



WWW.METALCON.COM | INFO@METALCON.COM | 617-965-0055

SCAN THIS QR CODE TO LEARN MORE & PRE-REGISTER AT METALCON.COM



INTERNATIONAL CONFERENCE UPDATE

CAROL CHIZMAR – INTERNATIONAL CONFERENCE CHAIR (MID-ATLANTIC CHAPTER) HYDRO EXTRUSION NORTH AMERICA

AWMI 2024 Conference – November 6-8, 2024, at The Sheraton Grand-Nashville, TN

We have finalized the agenda for what will be another great AWMI Conference! Located in the heart of the downtown, our hotel is situated in a prime spot that will allow you to easily enjoy all that Nashville has to offer. In addition, we have secured a larger room block for our event that we are expecting will allow everyone to secure a room without any issues.

Your committee has worked hard to secure some great tours, speakers and topics for the event. Our committee members are from across North America, and they represent 23 companies and various roles, so we are very diverse.

We were able to secure two different options for an educational tour on Thursday morning and the good news is that it will be a short bus ride to the facilities offered. During registration, you will have the opportunity to select the tour of your choice. Right after lunch (on your own) we will have our Leadership Breakout sessions where you will have an opportunity to speak to/hear from all of our officer and committee chairs along with an AWMI 101 session which we believe will benefit our newer members or those not currently serving on a board. Following the Leadership Breakouts, we will have an Educational Workshop with Dr. Amber Wright, back by popular demand. The rest of Thursday will include our reception for new members/1st time attendees along with our Welcome Reception and Dinner. The Southeast Region will be hosting the Hospitality Suite which follows dinner.

Friday we will have 2 keynote speakers and 3 interesting panel discussions. We are sure that the speakers and topics will be of interest to everyone in attendance. We hope to have everything finalized and ready to post by the end of May so stay tuned for the notice that registration is open.

AWMI is looking forward to providing a conference with many great opportunities to meet our four cornerstones, **GROW, NETWORK, EDUCATE AND MENTOR.**



MENTORING CORNER

SHAWNA J. LIVINGSTON – INTERNATIONAL MENTORING CHAIR (SEATTLE CHAPTER) RAISBECK ENGINEERING, INC.

In May, the AWM International Mentoring Committee hosted a webinar titled “Charting Your Course: Mentorship in Action,” the event provided insights into the AWM International Mentoring Program. Moderated by Sian Marcone, the webinar featured panelists Rachael McClellan, Jill Donahue, Anna Tompkins, and Erica Ward. The speakers shared their personal experiences and reflections on how their mentor pairings impacted them both personally and professionally. Each panelist highlighted how the program has supported their careers, broadened their skill sets, and fostered meaningful professional relationships.



For AWM members interested in participating in the International Mentoring Program and wanting more information, be sure to check out the video online at: [AWM Mentoring - AWM](#). Topics covered in the webinar included the importance of mentorship in navigating today’s professional landscape, the benefits for both mentors and mentees, and practical tips for establishing successful mentoring relationships. Additionally, during the webinar, there was an overview of how to get involved. Mentees have the opportunity to connect with experienced mentors who can provide guidance, support, and industry insights. In turn, mentors can share their expertise, enhance their leadership skills, and make a meaningful impact in the lives of other professionals.

A big thank you to Anna, Erica, Jill, Rachael and Sian for their invaluable insights and dedication to the AWM Mentoring Program!

To join the program as a mentor, follow this link: [AWM_Mentor_Survey](#).

To request a mentor, follow this link: [AWM Mentor Request](#).

Please email your completed survey or any questions to AWMI@talley.com with the subject: Mentoring Program.

AWM is here to support your personal and professional growth. Please reach out if you need assistance or have any questions. We look forward to your participation in the program!





OLYMPICSTEEL

The metal you need. The company you can trust.

olysteel.com



Founded in 1898 and headquartered in St. Louis, Missouri, Alter Trading Corporation is one of the nation's leading metal recyclers and brokers, with processing centers and offices throughout the central United States.

As one of the largest recyclers of ferrous and non-ferrous metals in North America, Alter maintains a strong reputation for innovation and integrity across the industry.

Alter continues to develop new and expanded services and capabilities to meet the changing needs of its clients and the marketplace. Visit www.altertrading.com to learn more.

AWMI Silver Corporate Member

Proudly supporting the Association of Women in the Metal Industries for over 20 years.

Empowering Women at SMS group

SMS group launches its newest employee resource group:

The **Women's Impact Network (WIN)**, dedicated to fostering a supportive and empowering environment for women within our organization. Through this group, we are offering the opportunity for mentorship, building meaningful connections, and supporting the professional development of our members by providing a platform for women to share experiences, seek guidance, and support each other.



SMS group



REGIONAL UPDATES



MID ATLANTIC CHAPTER

**HAILEE GERWITZ; MID-ATLANTIC CHAPTER SECRETARY,
INDEPENDENT STAINLESS LLC**



AWMI Mid-Atlantic Chapter prides itself on being one of the best Chapters. What sets us apart from others is that we aren't just a chapter, we are a sisterhood. Sisterhood reminds us that we aren't alone. We are a group of women who encourage each other and support one another by group mentoring.

Group mentoring works for us, because it offers the opportunity for all of us to learn from one another's perspective. Our Chapter has created a safe space where every woman can share their ideas, collaborate, and enable growth within the chapter, work life and personal life.

We've created a network of successful women within the Metals Industry. We inspire our members and board members to take on every leadership position that is available. We all take part in leading one another by encouraging, inspiring and empowering each other.

We've created a unique culture within our chapter. As women, in a male dominated industry, our group mentoring style has helped develop a support system like no other.

AWMI Mid-Atlantic Chapter first event of 2024 was the AWMI Northeast: Spring Regional Meeting followed by the Mid-Atlantic Chapter Industry Dinner with the President of Hydro Extrusions North America.

The Northeast Spring Regional Meeting was an amazing time. We hosted an optional dinner and Escape Room for everyone that was attending the Regional Meeting, to help get to know each other in different chapters in the Northeast Region.

Our regional meeting was successful where each chapter collaborated with one another on different marketing approaches, tools and shared ideas to captivate more followers to different social media platforms.



Northeast Regional Meeting where we collaborated to support Western New York Chapter and sharing ideas about effective marketing

AWMI Northeast Regional Meeting in Allentown, PA! ATAS International, Inc hosted the chapter meeting followed by a fun tour where we learned about painted metals!



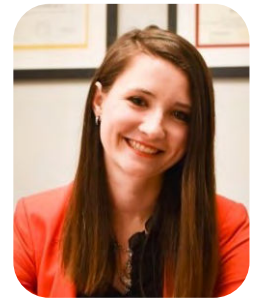
REGIONAL UPDATES

NEW YORK PROVISIONAL CHAPTER

LORA STADELMAN – NEW YORK PROVISIONAL CHAPTER PRESIDENT, V&S NY GALVANIZING

Guidance, experience, education and role models are just a few words that come to mind in capturing the essence of a mentor relationship.

It's often said that mentorship serves as the bridge between experience and growth, and we couldn't agree more! As a provisional chapter, New York has been fortunate to receive invaluable advice from numerous mentors in the Northeast region. They've generously shared their lessons learned, provided financial support, volunteered, offered ideas and even allowed us to vent in times of frustration. Above all, they've consistently guided us back to the path of success and have truly embraced AWMI's four cornerstones: network, growth, education, and mentor.



We're thrilled about the many "firsts" we will experience in the coming months and the growth that lies ahead. We're deeply grateful to everyone who has supported and encouraged us along the way, and we hope that we are able to pay it forward with the same grace they have given us to another provisional chapter in the future.

As we eagerly await the arrival of spring flowers, we are witnessing the growth and development of our provisional chapter, with each member, sponsor, mentor, and event attendee contributing to our journey.

Our upcoming golf tournament at Blue Heron Hills Golf Club, our first big event, promises a day filled with fun, networking, games, prizes and, of course, growth!

With the assistance of Anna Tompkins, we are excited to announce that this September, we will be organizing a tour at the Sims Metal Plant in Jersey City, NJ. This event will offer our members a unique insight into the realm of scrap recycling and the chance to network with individuals they may not typically encounter in their professional lives.

Following closely on the heels of our Sims Metal tour, we'll be hosting our Industry Dinner this October in Buffalo, NY with our keynote speaker, Lauren Chmielowiec, Owner of Upstate Steel. Lauren's remarkable journey, which includes her struggle to attain women-owned business status from New York State, serves as a poignant reminder of the significance of exchanging insights and experiences among us. Regardless of whether we officially define our connections as mentorship, we all contribute to guiding and supporting each other within this industry and in life overall. Here's to continued growth, learning, and mentorship as we navigate the exciting journey ahead together. Cheers to the mentors who light our path and to the mentees who eagerly soak up knowledge along the way!

REGIONAL UPDATES

PITTSBURGH CHAPTER UPDATE

SARA BLANKENSHIP-LEBER – PITTSBURGH CHAPTER PRESIDENT, HUSSEY COPPER

Confidant. Guide. Adviser. Counselor. Consultant. These are all synonyms for the word mentor. A person can have a mentor for every facet of life. Sometimes in the business world it can be a little daunting to ask for help or guidance. This is one of the many beauties of the AWMI organization. A person's willingness to help other ladies from all walks of life. Over my 6 years of involvement with AWMI, I have seen many ladies step up to guide the next generation. A great example of this is yearly at our conference when ladies challenge other newbies to step into leadership roles. AWMI offers a great opportunity to learn from some of the best and strongest women in the metal industries.



I had the privilege of learning the president role from our Past President, Marissa McMurray. It was truly awe inspiring to witness her organizational skills and means of motivating our board. She taught me the various levels of AWMI and their functions. She also helped me to slowly overcome my fear of public speaking. Examples like these are what make AWMI a valuable organization for both your professional and personal lives. What you learn from these other ladies will help you to grow as a person in many ways.

As we transition into a leadership change on the Pittsburgh Chapter board, I wanted to bring a new position to our board: Mentor Chair. This is one of my main focuses for our chapter's direction during my first few years of office. We are privileged to have several ladies on our board with many years of experience in the metals industries. They bring a wealth of knowledge to our board and many contacts throughout the industry. One important perspective they continue to show our board is the importance of relationships between colleagues. I asked Lydia Stromei to be our Mentor Chair for this term. She has over 30 years of experience in the metal industries. Her focus will be ensuring new members and board members feel welcome to our local chapter. Another Pittsburgh Board Member, Natalie Hennings, is also a current mentor in the AWMI organization. She has mentored a few ladies over the last few years and one lady that has recently joined the AWMI Pittsburgh Chapter board! Programs such as these are vital to AWMI's continued growth and outreach.

As one of AWMI's strategic goals, mentoring is a critical component for a person's career growth. Mentoring can come in various shapes and sizes. It can be formal as well as informal. Many companies are instituting mentorship programs throughout their company. I believe this is a vital program to keep employees engaged as well as promoting growth and advancement at their companies. Surveys show that employees value mentor programs and appreciate the valuable one on one attention.

Continuing with the goal of highlighting mentoring as a vital concept, the Pittsburgh Chapter hosted a mentoring/networking event on May 16th. Our speaker was Shannon Clark from the Toronto chapter. She opened with a fun networking activity to engage the audience and allow people to step out of their comfort zone.

We are looking forward to the rest of our great events that we have planned for the rest of the year! Check out the AWMI Pittsburgh Chapter link and hope to see you at one of our events!!

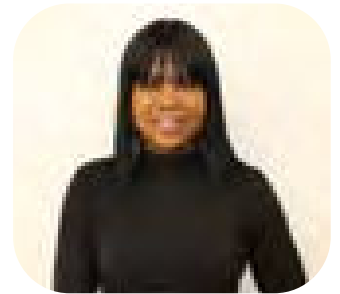
[Events from May 16 – May 16 – Pittsburgh Chapter](#)

REGIONAL UPDATES

TORONTO CHAPTER

ALECIA SALMON – TORONTO CHAPTER MENTORING CHAIR, SAMUEL, SON & CO.

Hello from the Toronto Chapter. Although the first half of the year has flown by, our Chapter has accomplished many of our yearly objectives including, growing our membership by 13% from 2023 to 166 members, giving our members the opportunity to tour the Toyota facility as well as hosting a successful Industry Dinner. We've also had the opportunity to partner with the St. Louis Chapter by attending their Industry Dinner and joining their efforts to recruit new members.



While all of these are great accomplishments, I believe that we are truly at our best when we invest in each other, and what better way to do so than through Mentoring. As the Mentoring Chair, I may be partial, however it is truly because of the positive impact that mentorship has had on my personal and professional life. This is not only a true statement for me, but also true for countless others.

At times the idea of mentoring someone or being a mentee can seem daunting, especially when we think about the time commitment and the effort that we need to put in. However, this is not necessarily the case. Our mentoring motto for the Toronto Chapter this year is **“Simple but Effective”**. By simplifying our efforts, it makes the mentoring process easier to navigate and our efforts are more focused on effectively impacting those with whom we interact. For example, we've launched our “5 Minute Mentoring Moments”, which is simply an email blast to our Board Members with links to articles on mentorship, leadership, and inspirational quotes from women leaders around the globe. These articles are then shared with others on our teams or within our broader network. The feedback has been positive, and many have shared that the articles have been indeed helpful and effective. **“Mentorship doesn't have to be a formal agreement between two people with scheduled meetings to be impactful, it can be as simple as a quick check-in or spending several minutes listening and offering guidance to someone within your network to be effective.” - Daniela Todaro – General Manager, Samuel, President, AWMI Toronto Chapter**

Mentoring has been the catalyst that has helped me and countless others to excel. I am truly a product of great mentors throughout the different phases of my life, and I would be remiss if I didn't continue to pay it forward and I encourage you to do the same. I challenge you to transform someone's life through mentorship this year!

CONNECTING EDUCATING ADVOCATING



cwbassociation

The CWB Association is a not-for-profit division of the CWB Group. It is a national member-driven association mandated to promote and support Canada's welding and joining industry.

MEMBERS RECEIVE FREE ACCESS TO

- WELD Digital Magazine
- Affinity Programs
- Educational Events
- Industry Updates
- And more



JOIN TODAY! cwbassociation.org ➔



CHICAGOLAND'S PREMIER SCRAP METAL RECYCLING COMPANY



(847) 233-0300

cozzirecycling.com

Cozzi Full Service Recycling Yard
2501 Grant Avenue
Bellwood, IL 60104

Cozzi Public Metal Recycling Center
2400 Main Street
Melrose Park, IL 60160

CALL FOR VOLUNTEERS!

Are you interested in getting more involved in AWMI? Chapters and International Committees are always looking for volunteers! This is a great way to meet more members, learn about important Association initiatives and get involved! For more information on committee contributions and time commitments, reach out to your local chapter or the chair listed below!



- **Finance Committee:** Lauren Kerekes Lauren.Kerekes@wthg.com
- **Marketing Committee:** Marissa McMurray Marissa.mcmurray@hatch.com
- **Membership Committee:** Becky Dolan bdolan@infosight.com
- **Mentoring Committee:** Shawna Livingston shawnajlivingston@gmail.com
- **Metal Mail Committee:** Beth Amundson beth.amundson@qualitymetalsinc.com
- **Scholarship Committee:** Beth Amundson beth.amundson@qualitymetalsinc.com
- **2024 Annual Conference Committee:** Carol Chizmar Carol.Chizmar@hydro.com

RYERSON

BE A PART OF HISTORY.
JOIN OUR TEAM.

RYERSON.COM/ABOUT-US/CAREERS



U. S. Steel and our Women's Inclusion Network (WIN) employee resource group are proud to support our membership with the Association of Women in the Metal Industries (AWMI)

U. S. Steel and WIN are focused on cultivating an inclusive environment that enables women to maximize their professional success through networking, education, recruitment, leadership opportunities and community involvement.



U. S. Steel



WIN
Women's Inclusion
Network

NEW CORPORATE MEMBERS

AWMI WELCOMED THREE NEW CORPORATE COMPANY MEMBERS FROM MARCH 1, 2024 THROUGH JUNE 30, 2024

Algoma Steel Inc.
Duluth Steel Trading
Germantown Iron and Steel Corp.

Corporate Bronze Member
Corporate Bronze Member
Corporate Bronze Member



**From our products to our people,
Heidtman Steel has strength that lasts.**

For 70 years, we've been on the leading edge of continuous improvement and technological advancement in the steel industry. We are looking for individuals with a passion to excel.

Multiple locations. Team Atmosphere. Come join us!

Start your fulfilling career with Heidtman Steel!
www.heidtman.com/careers/apply-now/

NEW MEMBERS

AWMI WELCOMED 383 NEW MEMBERS FROM MARCH 1, 2024, THROUGH JUNE 30, 2024

MEMBER	COMPANY	CHAPTER
Emily Acuna	Steel Boss International, Inc.	Texas Chapter
Danielle Adams	ASA	New York Chapter
Sedelia Aguinaga	Reliance-Bralco Metals	Texas Chapter
Alok Aiyar	Alliance Trading Inc.	Chicago Chapter
Heidi Alnutt	Jackson Welding and Gases	New York Chapter
Melissa Alsmann	Reliance-Feralloy Indiana Corporation	Chicago Chapter
Devon Alu	Worthington Steel	Columbus Chapter
Veronica Amador	Reliance-National Specialty Alloys, Inc.	Texas Chapter
Joseph Amaro	Naylor Pipe Company	Chicago Chapter
Hailey Ameling	Nucor Steel Marion	Columbus Chapter
Andrea Amendola	Metallus Inc	Cleveland Chapter
Julie Amsden	B2B Industrial Packaging	St. Louis Chapter
Sarai Haydee Andrade Barrera	Reliance-National Specialty Alloys, Inc.	Texas Chapter
Starr Andrews	Jackson Welding & Gas Products	New York Chapter
MICHELE ARBAUGH	Electrolux Major Appliances	Carolinas Chapter
Laura Arbelaez	Reliance-Reliance Steel & Aluminum Co.	Texas Chapter
Elizabeth Arnett	A.M. Castle & Co. - Banner Industries	Chicago Chapter
Heather Aviles	Reliance - Metals USA	Mid-Atlantic Chapter
Natalie Avina	Reliance-Reliance Steel & Aluminum Co.	Texas Chapter
Billie Bacay	Reliance-Reliance Steel & Aluminum Co.	California Chapter
Hollie Bagalio	Reliance-Feralloy Corporation	Carolinas Chapter
Blake Bain	ArcelorMittal Dofasco	Toronto Chapter
Danielle Baker	Algoma Steel Inc.	Toronto Chapter
Lisa Baldock	Gerdau	Mid-Atlantic Chapter
Elena Barahona	Reliance-Metals USA, Inc.	Texas Chapter
Harlee Barfknecht-Zuber	Iron and Oak Railroad Services	Toronto Chapter
Kyle Becker	Marsh McLennan	St. Louis Chapter
Madison Bedell	Reliance-Earle M. Jorgensen Company	Alabama Chapter
Samantha Beinlich	Reliance-Earle M. Jorgensen Company	Seattle Chapter
Ashley Benvenuto	National Tube Supply	Chicago Chapter
Brian Bermingham	Reliance-CCC Steel, Inc.	California Chapter
Patricia Beskow	Metals USA	Wisconsin Chapter
Sheria Betz	Reliance-National Specialty Alloys, Inc.	Texas Chapter
Amy Bevis	Reliance-Feralloy Corporation	Carolinas Chapter
Debra Biden	Samuel Son and Co.	New York Chapter
Tinamarie Biera	Reliance-Bralco Metals	Texas Chapter
Mindi Billings	Reliance-Feralloy Corporation	Chicago Chapter
Colleen Blackburn	Three D Metals	Mid-Atlantic Chapter
Sara Blake	Stelco Inc.	Toronto Chapter
Maria Bracho	Reliance-National Specialty Alloys, Inc.	Texas Chapter
Martha Bretado	Reliance-Earle M. Jorgensen Company	California Chapter
Madalyn Brewer	Worthington Steel	Columbus Chapter
Lisa Bright	Reliance-Viking Materials, Inc.	Minnesota Chapter
Dominique Brooks	Reliance-Earle M. Jorgensen Company	California Chapter
Nicky Brown	Reliance-Reliance Steel & Aluminum Co.	Texas Chapter

NEW MEMBERS (cont.)

MEMBER	COMPANY	CHAPTER
Hanna Brown	Alliance Steel	Chicago Chapter
Shaunna Bryum	Reliance-Infra-Metals Co.	Mid-Atlantic Chapter
Katie Bublitz	Germantown Iron and Steel Corp.	Wisconsin Chapter
Nicole Burke	Reliance-Infra-Metals Co.	Mid-Atlantic Chapter
Kimberly Burkhart	Reliance-Reliance Steel & Aluminum Co.	California Chapter
Erika Burton	Reliance-National Specialty Alloys, Inc.	Texas Chapter
Britney Cardona	Ohio Star Forge Co	Cleveland Chapter
Tina Cardosa	Reliance-PDM Steel Service Centers, Inc.	California Chapter
John Cardwell	ArcelorMittal NA	Detroit Chapter
Sarah Cargill	Reliance-American Metals Corporation	Seattle Chapter
Ashley Carnicelli	Vicwest Building Products	Toronto Chapter
Melanie Carr	MC Trading Americas LLC	Florida Chapter
Abigail Carr	Delegation of Quebec in Chicago Chapter	Chicago Chapter
Grace Carrasco	A.M. Castle & Co. - Castle Metals	California Chapter
James Carroll	James Carroll	Detroit Chapter
Julie Carroll	Reliance-Chatham Steel Corporation	Florida Chapter
Debi Carter	Reliance-Reliance Steel & Aluminum Co.	California Chapter
Erik Castro	Reliance-Tubular Steel, Inc.	Texas Chapter
Peter Cegielski	Reliance-Pacific Metal Company	Portland Chapter
Sanjibani Chaurasia	Russel Metals	Toronto Chapter
Desiree Chavez	Reliance-Fry Steel Company	California Chapter
Olga Chernov-Gitin	Mainline Metals Inc.	Mid-Atlantic Chapter
Heather Christensen	Gerdau	St. Louis Chapter
Courtney Cina	SA Recycling	Cleveland Chapter
BreeAnna Cochran	Ryerson	Alabama Chapter
Charmain Colbert	Reliance-Reliance Steel & Aluminum Co.	Texas Chapter
Michelle Collett	Reliance-Tubular Steel, Inc.	Cleveland Chapter
Traci Conner	Kaiser Aluminum	Tennessee Chapter
Marcie Contrer	Reliance-Reliance Steel & Aluminum Co.	California Chapter
Lynette Cook	Reliance-Reliance Steel & Aluminum Co.	Texas Chapter
Jennifer Cooke	Worthington Steel	Columbus Chapter
Kelly Cottle	Reliance-Delta Steel, Inc.	Texas Chapter
Connor Coup	Worthington Steel	Columbus Chapter
Gail Cryer	JNE Consulting Ltd.	Toronto Chapter
Jeri Lyn Curlee	Reliance-Sugar Steel Corporation	Chicago Chapter
Rachel Curtin	Reliance-Bralco Metals	California Chapter
Celeste Daniels	A.M. Castle & Co. - Banner Industries	Tennessee Chapter
Robin DaVaney	Reliance-Phoenix Corporation	Chicago Chapter
Coleen Davis	Reliance-Sugar Steel Corporation	Chicago Chapter
Theresa Day	Reliance-Service Steel Aerospace Corp	Seattle Chapter
Deborah Dee	V&S Galvanizing	Columbus Chapter
Tim Deichmiller	Reliance-Feralloy Corporation	Chicago Chapter
Katherine Denney	ReMatter	Alabama Chapter
Melody Dill	Reliance-Delta Steel, Inc.	Texas Chapter
Catalina Dominguez	Reliance-Bralco Metals	California Chapter
Vicotria Donahue	Reliance-AMI Metals, Inc.	Texas Chapter
Bill Doner	MW Metals Group	Columbus Chapter
Diane Dormanen	Coremark Metals	Minnesota Chapter

NEW MEMBERS (cont.)

MEMBER	COMPANY	CHAPTER
Tracy Drees	Reliance-Precision Strip Inc.	Cincinnati/No. KY Chapter
Ashlee Dreher	Reliance-Tubular Steel, Inc.	California Chapter
Ashley Dumas	A.M. Castle & Co.	Chicago Chapter
Christine Duncan	JSW Steel USA Ohio, Inc.	Cleveland Chapter
Stephanie Duncan	All Metals	Columbus Chapter
Jennifer Duneman	Reliance-Metals USA, Inc.	Carolinas Chapter
Jen Egbert	Reliance-Precision Strip Inc.	Columbus Chapter
Prairie Elliott	Reliance-Fry Steel Company	Texas Chapter
Lorrinda Elliott	Hydro Extrusions	Seattle Chapter
Tricia Emmerman	Reliance-Reliance Steel & Aluminum Co.	California Chapter
Jonathan Evans	A.M. Castle & Co. - Banner Industries	Tennessee Chapter
Cyndi Fairbanks	Reliance-Alaska Steel Company	Seattle Chapter
Jeannie Figueroa	Reliance-National Specialty Alloys, Inc.	Texas Chapter
Michael Fiore	The Operations Group	Portland Chapter
Tomica Floryan	Reliance-DuBose National Energy Services, Inc.	Carolinas Chapter
Nicholas Fout	Worthington Steel	Columbus Chapter
Amy Francik	Trinity Products	St. Louis Chapter
elaine French	Samuel	Toronto Chapter
Hyra Frljuckic	Reliance-Reliance Steel & Aluminum Co.	California Chapter
Farley Frydman	MW Metals Group	Columbus Chapter
Benji Frydman	MW Metals Group	Columbus Chapter
Dina Fuentes	Reliance-Chapel Steel Corp.	Texas Chapter
Danette Fuller	Reliance-AMI Metals, Inc.	California Chapter
Ashley Furbee	Reliance-Fox Metals and Alloys, Inc.	Texas Chapter
Robert Gallay	Reliance-Chapel Steel Corp.	Chicago Chapter
Michelle Gannd	Reliance-National Specialty Alloys, Inc.	Texas Chapter
Jennifer Gardner	Reliance-PDM Steel Service Centers, Inc.	California Chapter
Dyanne Garibay	Olympic Steel, Inc.	Minnesota Chapter
Jan Gary	Germantown Iron and Steel Corp.	Wisconsin Chapter
Darlene Gay	Reliance-Service Steel Aerospace Corp	California Chapter
Myranda Gean	Nucor	Florida Chapter
Jennifer Gentile	CMC Steel	Mid-Atlantic Chapter
MacKenzie Gibson	Tufts Grinding, Inc.	Chicago Chapter
Matt Gifford	Reliance-Yarde Metals, Inc	Mid-Atlantic Chapter
Shannon Gleason	Reliance-Reliance Steel & Aluminum Co.	California Chapter
Megan Goldberg	Reliance-Metals USA Carbon Flat Rolled, Inc.	Mid-Atlantic Chapter
Stacey Gomez	Reliance-Tubular Steel, Inc.	California Chapter
Tara Gorby	Nucor Steel Marion	Columbus Chapter
Krista Grabinski	Reliance-Viking Materials, Inc.	Minnesota Chapter
James Graff	Reliance - Tubular Steel, Inc.	St. Louis Chapter
Alexandra Graham	Reliance-Earle M. Jorgensen Company	Portland Chapter
Rebecka Gratz	Wipfli	St. Louis Chapter
Shelley Gray	Laurel Steel, a division of Nucor	Toronto Chapter
Dietra Grays	Reliance-Reliance Steel & Aluminum Co.	California Chapter
Stacy Green	Alro Steel Corporation	Carolinas Chapter
Andrea Greenhill	Reliance-Feralloy Corporation	California Chapter
Lisa Gunter	Hydro Extrusion North America	Chicago Chapter
Laura Gute	Vance Metal Fabricators Inc	New York Chapter
Dione Guy	Midrex Technologies, Inc	Carolinas Chapter

NEW MEMBERS (cont.)

MEMBER	COMPANY	CHAPTER
Salim Hage	A.M. Castle & Co. - Banner Industries	California Chapter
Tammy Harper	Alter Trading Corp.	St. Louis Chapter
Diana Henson	Reliance-Sugar Steel Corporation	Chicago Chapter
Eileen Hernandez	Reliance-Fry Steel Company	California Chapter
Katherine Herrera	Reliance-National Specialty Alloys, Inc.	Texas Chapter
Mark Hightower	Reliance-Feralloy Corporation	Cincinnati/No. KY Chapter
Brittany Hightower	Reliance-Reliance Steel & Aluminum Co.	Texas Chapter
Jacob Hill	Worthington Steel	Chicago Chapter
Louanne Ho	Reliance-Reliance Steel & Aluminum Co.	Chicago Chapter
Stephanie Hoffman	Miller Electric MFG	Mid-Atlantic Chapter
Amanda Hohenstein	Nucor Steel - Indiana	Chicago Chapter
Liz Holmes	Reliance-Feralloy Corporation	Alabama Chapter
Sandy Hook	Reliance-Nu-Tech Precision Metals Inc.	Toronto Chapter
Amanda Hopkins	Reliance-Earle M. Jorgensen Company	Chicago Chapter
Bob Horyza	Duluth Steel Trading	Minnesota Chapter
Erica Horyza	Duluth Steel Trading	Minnesota Chapter
Leslie Hotchkiss	Reliance-AMI Metals, Inc.	Tennessee Chapter
Mark Huegel	Reliance-Tubular Steel, Inc.	St. Louis Chapter
Beth Izzo	BMO Harris Bank	Chicago Chapter
Susan James	Reliance-Phoenix Corporation	Pittsburgh Chapter
Caitlyn Jarman	Reliance-Earle M. Jorgensen Company	Seattle Chapter
Ryne Jenke	A.M. Castle & Co. - Castle Metals	Chicago Chapter
Nanci Johnson	Samuel, Son & Co.	Alabama Chapter
Lauren Johnson	Duluth Steel Trading	Minnesota Chapter
Erin Jones	Reliance-Tubular Steel, Inc.	Texas Chapter
Kelley Kaezyk	Steelforce Packaging	Pittsburgh Chapter
Caitlin Kalep	Pennsylvania Steel Company, Inc.	Cleveland Chapter
Stephany Kambarian	Reliance-Earle M. Jorgensen Company	California Chapter
Cheralee Kattenburg	Algoma Steel Inc.	Toronto Chapter
Lindsey Keller	Reliance-Phoenix Corporation	California Chapter
Rebecca Kelly	Nucor Steel	Cincinnati/No. KY Chapter
Jeni Kendall	Reliance-Feralloy Corporation	Alabama Chapter
Jennifer Kennealy	Reliance-The Richardson Trident Company, LLC	Texas Chapter
Sara Kheiri	Max Aicher North America	Toronto Chapter
Jeanie Kimbrell	Reliance-Earle M. Jorgensen Company	Quad Cities Chapter
Sara Kingsbury	Nucor Steel Marion	Columbus Chapter
Wade Klager	Northwest Shippers Inc.	Portland Chapter
Kim Kleiser	Reliance-Reliance Steel & Aluminum Co.	Mid-Atlantic Chapter
Elaine Ko	Reliance-Metals USA, Inc.	California Chapter
Constance Kosler	Reliance-National Specialty Alloys, Inc.	Texas Chapter
Ann Marie Krohn	A.M. Castle & Co. - Banner Industries	Tennessee Chapter
Amber Kuklica	Reliance-Encore Metals	Toronto Chapter
Alexandria Kurhajec	Reliance - Metals USA	Chicago Chapter
Kate Kuuskman	Algoma Steel Inc.	Toronto Chapter
Lindsey Lafferty	Duluth Steel Trading	Mid-Atlantic Chapter
Emily LaFlash	Gerdau	Florida Chapter
Kari LaHaie	Magic Steel	Detroit Chapter
Heidi Lamberte	Reliance-CCC Steel, Inc.	California Chapter
Terri Lange	Reliance-Precision Flamecutting and Steel, Inc.	Texas Chapter
Randall Lapp	Reliance-Metals USA, Inc.	Chicago Chapter
Maria Lara	Reliance-Phoenix Corporation	Alabama Chapter

NEW MEMBERS (cont.)

MEMBER	COMPANY	CHAPTER
Robin Large	Alter Trading Corp.	St. Louis Chapter
Tim Leahy	MW Metals Group	Cincinnati/No. KY Chapter
Renee Lea-Rueda	Reliance-Viking Materials, Inc.	Minnesota Chapter
Alison Lensink	Worthington Steel	Columbus Chapter
Haley Lingerfelt	Reliance-Feralloy Corporation	Alabama Chapter
Alex Little	Algoma	Toronto Chapter
Sara Livingood	Duluth Steel Trading	Minnesota Chapter
Sherry Long	Arconic	Detroit Chapter
Val Lopez	Reliance-Earle M. Jorgensen Company	California Chapter
Brandy Lopez	Reliance-Best Manufacturing, Inc.	St. Louis Chapter
Melissa Loy	Reliance-Siskin Steel & Supply Company, Inc.	Tennessee Chapter
Sari MacPherson	Reliance-Reliance Metals Canada Limited	Seattle Chapter
Lydia Maddox	Nucor Steel Florida Chapter	Florida Chapter
Carissa Maikai	Reliance-Fry Steel Company	California Chapter
Jamyl Malone	Reliance-Reliance Steel & Aluminum Co.	Texas Chapter
Mona Malsberg	Reliance-Tube Service Co.	California Chapter
Veronia Mankarious	Optima Steel International, LLC	Florida Chapter
Imaru Marquez	3 PI Links	Toronto Chapter
Kyle Martinek	Reliance-Sugar Steel Corporation	Chicago Chapter
Denise Mayberry	SSAB Americas	Texas Chapter
Whensday Mayes	Reliance-Sugar Steel Corporation	Chicago Chapter
Patty McCarthy	Reliance-Chapel Steel Corp.	Mid-Atlantic Chapter
Angela McCloud	Reliance-Metals USA Carbon Flat Rolled, Inc.	Cleveland Chapter
Jazlyn McEwen	Reliance-Metal Center	California Chapter
Doug McGowen	Reliance-Tube Service Co.	California Chapter
Madeleine McKay	Reliance-Reliance Steel & Aluminum Co.	Texas Chapter
Angie McKinnon	Reliance-Fox Metals and Alloys, Inc.	Texas Chapter
Lydia Mclaughlin	Reliance-Yarde Metals, Inc	Cincinnati/No. KY Chapter
Alida Medrano	Reliance-CCC Steel, Inc.	California Chapter
Mindy Meistickle	Reliance-Phoenix Corporation	Alabama Chapter
Vivian Lorraine Mejia	Reliance-MetalCenter	California Chapter
Adrian Mejia	Reliance-Haskins Steel Co., Inc.	Seattle Chapter
Josh Mertens	Reliance-Viking Materials, Inc.	Minnesota Chapter
Kelly Mick	Reliance-Feralloy Indiana Corporation	Chicago Chapter
Mary Mies	Reliance-Tubular Steel, Inc.	Texas Chapter
Annie Millar	A.M. Castle & Co. -- Banner Industries	Chicago Chapter
Jocqueline Millican Holder	Reliance-Feralloy Corporation	Alabama Chapter
Niki Mingo	Reliance-Diamond Manufacturing Company	Carolinas Chapter
Michelle Mireault	Reliance-Reliance Metals Canada Limited	Seattle Chapter
April Molloy	Reliance-Reliance Metals Canada Limited	Toronto Chapter
Nichalae Moore	Reliance-Reliance Steel & Aluminum Co.	California Chapter
Melissa Morada	Reliance-Fry Steel Company	California Chapter
Lori Moss	Reliance-Fox Metals and Alloys, Inc.	Texas Chapter
Kelly Moyher	Reliance-Chatham Steel Corporation	Florida Chapter
John Mucci	Steel Technologies	Detroit Chapter
Susan Munoz Jansma	Reliance-Reliance Steel & Aluminum Co.	California Chapter
Susan Nelson	Reliance-Infra-Metals Co.	Florida Chapter
Laura Nelson	Reliance-Viking Materials, Inc.	Minnesota Chapter
Angie Nice	Reliance-Siskin Steel & Supply Company, Inc.	Tennessee Chapter
Julanda Norton	GERDAU AMERISTEEL	Florida Chapter

NEW MEMBERS (cont.)

MEMBER	COMPANY	CHAPTER
Leah Novotny	Sherwin-Williams	Minnesota Chapter
Liz Nunez	Reliance-Lynch Metals	California Chapter
Erika Oblak	A.M. Castle & Co. - Castle Metals	Cleveland Chapter
April Oglesbee	BlueScope Recycling and Materials LLC	Detroit Chapter
Kimberly OMara	A.M. Castle & Co. - Castle Metals	Chicago Chapter
Margaret Orlando	Alter Trading Corporation	St. Louis Chapter
Colin Osborne	Samuel, Son & Co., Limited	Toronto Chapter
Tan Osothsongkroh	SSAB Americas	Quad Cities Chapter
Michelle Ouellet	Numesh Inc.	Toronto Chapter
Britney Palmer	bp	Texas Chapter
Karen Pappas	Reliance-Sugar Steel Corporation	Chicago Chapter
Cheryl Parker	Reliance-Infra-Metals Co.	Mid-Atlantic Chapter
Jennifer Partain	Reliance-Tubular Steel, Inc.	St. Louis Chapter
Maria Perrella	Samuel, Son & Co., Limited	Toronto Chapter
Michael Petroff	Ferragon Corporation	Cleveland Chapter
Lupe Pineda Soto	Reliance-Merfish United, Inc.	California Chapter
Rachel Pironaggi	Samuel, Son & Co.	Toronto Chapter
Missy Pollock	Reliance-Yarde Metals, Inc	Carolinas Chapter
Amber Poniewaz	Germantown Iron and Steel Corp.	Wisconsin Chapter
Luis Ponte	Samuel, Son & Co., Limited	Toronto Chapter
Katrina Posedel	Reliance-Service Steel Aerospace Corp	Cleveland Chapter
Lorie Powers	Reliance-Chapel Steel Corp.	Chicago Chapter
Sara Powers	RSDC/MSP	Detroit Chapter
Ryan Preas	MW Metals Group	Columbus Chapter
Danielle Prost	Reliance-Tubular Steel, Inc.	St. Louis Chapter
Heather Radun	Reliance-Yarde Metals, Inc	New York Chapter
Kelley Ragains	O'Neal Steel	Columbus Chapter
Abigail Raines	Ferrousouth	Tennessee Chapter
Jenna Rakers	Alter Trading Corporation	St. Louis Chapter
Vanessa Ramos	Reliance - Metals USA	Chicago Chapter
Connie Raspado	Reliance-Reliance Metals Canada Limited	Toronto Chapter
Victoria Reed	Reliance-Phoenix Corporation	Carolinas Chapter
Jaclyn Reed	Reliance-Northern Illinois Steel Supply Co.	Chicago Chapter
Rebecca Reist	Saul Ewing LLP	Mid-Atlantic Chapter
Jane Rembowicz	Coremark Metals	Minnesota Chapter
Sarah Richter	Reliance-Tubular Steel, Inc.	St. Louis Chapter
Robby Rinehart	The Worthington Steel Company	Columbus Chapter
Brandy Risner	Nucor Steel Arkansas	Tennessee Chapter
Jolene Rivera	Reliance-National Specialty Alloys, Inc.	Texas Chapter
Olivia Rivera	MAINLINE METALS, INC.	Carolinas Chapter
Sara Robinson	Reliance-Metals USA, Inc.	Detroit Chapter
Milcah Robinson	Unites States Steel	Chicago Chapter
Desiree Rodriguez	Reliance-Phoenix Corporation	Chicago Chapter
Lea Rodriguez	Reliance-Reliance Steel & Aluminum Co.	Florida Chapter
Bryanna Rodriguez	Reliance-National Specialty Alloys, Inc.	Texas Chapter
Melissa Roe	Reliance-KMS Inc.	Carolinas Chapter
Amanda Rogers	Chaparral Welding	Texas Chapter
Janell Rotella	PerenniAL Group	New York Chapter
Sandi Roth	Reliance-Siskin Steel & Supply Company, Inc.	Tennessee Chapter
Glinda Ryan	Reliance-Best Manufacturing, Inc.	Tennessee Chapter

NEW MEMBERS (cont.)

MEMBER	COMPANY	CHAPTER
Jamie Saldana	Reliance-Yarde Metals, Inc	Mid-Atlantic Chapter
Katie Sales	Reliance-Reliance Steel & Aluminum Co.	California Chapter
Morgan Salmi	Alliance Fabrication and Manufacturing	Chicago Chapter
Jennie Sample	Reliance-Yarde Metals, Inc	Mid-Atlantic Chapter
Morgan Sanders	Reliance-Metals USA Carbon Flat Rolled, Inc.	Cleveland Chapter
Rolly Sauls	Nucor	Texas Chapter
Sara Schmeltzer	Worthington Steel	Columbus Chapter
Nikki Schmidt	Unit Forgings	Wisconsin Chapter
Kyle Schmitt	Mead O'Brien	St. Louis Chapter
Brooke Schneider	Hydro Extrusion	Seattle Chapter
Steve Schoening	Reliance - Tubular Steel, Inc.	St. Louis Chapter
Diane Schroeder	BlueScope Recycling and Materials LLC	Detroit Chapter
Chandra Scott	Reliance-Reliance Steel & Aluminum Co.	Texas Chapter
Mary Shaw	Stelco Inc.	Toronto Chapter
Kasey Shipp	Naylor Pipe Company	Chicago Chapter
Cruz Sianez	A.M. Castle & Co. - Banner Industries	Chicago Chapter
Mariam Sidawi	Hatch Ltd.	Toronto Chapter
Samantha Siegal	A.M. Castle & Co. - Castle Metals	Texas Chapter
Sarah Singleterry	Jemison Metals	Alabama Chapter
Melissa Slusher	Joseph T. Ryerson & Son, Inc.	Alabama Chapter
Patricia Smith	Reliance-Service Steel Aerospace Corp	Seattle Chapter
Cassandra Smith	Joseph T. Ryerson & Son, Inc.	Alabama Chapter
Danielle Smith	Steel Testing Laboratories	Detroit Chapter
Tony Smith	VOSS Industries	Detroit Chapter
Maria Snyder	Nucor Steel Marion, Inc	Columbus Chapter
Julie Soderberg	Gerdau	Detroit Chapter
Irina Solovianenko	Access Machinery	Toronto Chapter
Alex Sommer	Germantown Iron and Steel Corp.	Wisconsin Chapter
Leslie Spaulding	Reliance-Smith Pipe & Steel Company	California Chapter
Katie Speelman	Reliance-Fry Steel Company	Cincinnati/No. KY Chapter
Darla Spencer	Van Meter	Quad Cities Chapter
Robyn Spigelmire	Reliance-Metals USA Carbon Flat Rolled, Inc.	Cleveland Chapter
Lindsey Stallings	Reliance-Best Manufacturing, Inc.	Tennessee Chapter
Erin Steenhoek	Reliance-Fer Alloy Corporation	Chicago Chapter
Jasmine Stevens	Reliance-Reliance Metalcenter	Florida Chapter
Jeff Stieler	Reliance-PDM Steel Service Centers, Inc.	California Chapter
Rebeca Sturgeon	Reliance-Metals USA, Inc.	Texas Chapter
Darine Talj	A.M. Castle & Co. - Castle Metals	Toronto Chapter
Angelica Tate	Samuel Sons & Co.	Toronto Chapter
Edie Telfer	Laurel Steel, a division of Nucor	Toronto Chapter
Kailey Tennant	Trinity Products	St. Louis Chapter
Karri Thomas	Berry Metal Company	Pittsburgh Chapter
Carla Thompson	Reliance-Metals USA Plates and Shapes, Inc.	Pittsburgh Chapter
Matthew Tomczak	ArcelorMittal	Detroit Chapter
Patricia Tomei	Reliance-Fer Alloy Indiana Corporation	Chicago Chapter
Megan Tornambe	Dimar Manufacturing	New York Chapter
Claudia Torres	Reliance-PDM Steel Service Centers, Inc.	California Chapter
Victoria Torres	Reliance-Delta Steel	Texas Chapter
Tiffany Town	Reliance-Metals USA Plates and Shapes, Inc.	Texas Chapter
Denise Trejo	Reliance-Bralco Metals	California Chapter

NEW MEMBERS (cont.)

MEMBER	COMPANY	CHAPTER
Cecilia Trent	Reliance-Service Steel Aerospace Corp	Texas Chapter
Stephanie Turner	Reliance-Feralloy Corporation	Alabama Chapter
Laurie Vale	Reliance-Merfish United, Inc.	Texas Chapter
Abby VanPelt	Trinity Products	St. Louis Chapter
Katie Vardaro	Reliance-Tubular Steel, Inc.	St. Louis Chapter
Jennifer Varwig	Reliance-PDM Steel Service Centers, Inc.	California Chapter
Lori Vendl	Reliance-AMI Metals, Inc.	Tennessee Chapter
Jessica Venezian	Reliance-Earle M. Jorgensen Company	California Chapter
Catia Viaggi	A.M. Castle & Co. - Banner Industries	Chicago Chapter
Tiffany Vickers	O'Neal Steel	Cincinnati/No. KY Chapter
Tara Vigneau	Precise Pipe	Toronto Chapter
Leah Virr	ArcelorMittal Dofasco	Toronto Chapter
Kirstein Votava	Reliance-Tubular Steel, Inc.	St. Louis Chapter
Brenda Walker	Algoma Steel Inc.	Toronto Chapter
Amanda Wall	A.M. Castle & Co. - Banner Industries	Tennessee Chapter
Lisa Walters	Reliance-Feralloy Corporation	Chicago Chapter
Ashley Wanik	Reliance-Metals USA Plates and Shapes, Inc.	New York Chapter
Valerie Welch	Reliance-Tubular Steel, Inc.	St. Louis Chapter
Sabrina Wellensiek	Falk PLI Engineering & Survying	Chicago Chapter
Matt Wells	Heidtman Steel	Detroit Chapter
Adam West	A.M. Castle & Co. - Banner Industries	Tennessee Chapter
Joy White	Alro Steel	Carolinas Chapter
Maggie Whitman	Reliance-Earle M. Jorgensen Company	Carolinas Chapter
JOAN Wickstrom	FALK PLI	Chicago Chapter
Kristin Wigginton	A.M. Castle & Co. - Banner Industries	Chicago Chapter
Anessa Wilcoxon	Reliance-Liebovich Bros., Inc.	Chicago Chapter
Lisa Willard	Reliance-Metals USA Carbon Flat Rolled, Inc.	Mid-Atlantic Chapter
Jenna Williams	A.M. Castle & Co. - Castle Metals	Chicago Chapter
Jennifer Williams	A.M. Castle & Co. - Castle Metals	Carolinas Chapter
Laura Williams	Unipower, LLC	Tennessee Chapter
Marnee Wilson	Industrial Inspection and Services LLC	Portland Chapter
Kayla Wilson	Algoma Steel Inc.	Toronto Chapter
Ruthanna Witherite	Mainline Metals, Inc.	Mid-Atlantic Chapter
Dave Wochele	Reliance-Yarde Metals, Inc	Mid-Atlantic Chapter
Penne Wolf	ASA	New York Chapter
Angel Woodrum	Reliance-Metals USA Carbon Flat Rolled, Inc.	Cleveland Chapter
Jyothi Yadav	A.M. Castle & Co. - Castle Metals	Toronto Chapter
Dan Yehling	Heidtman Steel Products Inc	St. Louis Chapter
Leonor Zavala	Reliance-Earle M. Jorgensen Company	California Chapter
Sofia Zepeda	Reliance-Earle M. Jorgensen Company	California Chapter

2024 CORPORATE MEMBERS

2024 AWTI CORPORATE MEMBER COMPANIES

AWTI WISHES TO THANK OUR CORPORATE MEMBERS FOR THEIR CONTINUED SUPPORT OF OUR ORGANIZATION. WE VALUE YOUR DEDICATION TO OUR MISSION.

PLATINUM

ArcelorMittal
Cleveland-Cliffs Inc.
Hydro
Nucor Corporation
Phillips Tube Group, Inc.
Reliance Steel & Aluminum Co.
Russel Metals Inc.
Ryerson
Samuel Son, & Co., Limited
Sherwin-Williams
SSAB Americas
Steel Dynamics, Inc.
Stelco Inc.
United States Steel Corporation

GOLD

A.M Castle & Co. – Banner Industries
Kenwal Steel
Kloeckner Metals Corporation
Metallus
North Star BlueScope Steel
Olympic Steel, Inc.
PPG Industries, Inc.
Steelscape, LLC
TMS International
Worthington Steel

SILVER

Alter Trading
Alton Steel Inc.
Arconic
Charter Manufacturing
Commercial Metals Company (CMC Steel)
Gerdau
Heidtman Steel
InfoSight Corporation
Leeco Steel, LLC

Majestic Steel USA, Inc.
McNeilus Steel Inc.
Mill Steel Company
National Material Company
Proler Industries
Quaker Houghton
SMS group
Target Steel
Worthington Enterprises

BRONZE

AA Metals, Inc.
Air Products
Algoma Steel Inc.
Alliance Recycling Group
Andes Coil Processors
Cozzi Recycling LLC
CWB Group – Association
Duluth Steel Trading
Fairway Transit, Inc.
Ferragon Corp./Ferrous Metal Processing Co
Ferrous Processing & Trading Co.
Flat Rock Metal, Inc.
Germantown Iron and Steel Corp.

Hatch Ltd.
Lapham-Hickey Steel
Mainline Metals Inc.
Marubeni-Itochu Steel America Inc.
Metalogics
Midrex Technologies, Inc.
MW Metals Group, LLC.
Naylor Pipe Company
North Shore Steel
Northwest Shippers, Inc.
O'Brien Steel Service Co.
Ohio Star Forge Co.
Optimus Steel, LLC

PGT Trucking, Inc.
PNC Bank
Reliance-Pacific Metal Company
Reliance-Viking Materials, Inc.
Steelspider.com
Three D Metals, Inc.
Triple M Metal
United Scrap Metal, Inc.
Wisconsin Steel & Tube
Zeeco Metals, Inc.



Association of Women
in the Metal Industries

2024 CONFERENCE
**Sheraton
Grand
Nashville
Hotel**

November
6th - 8th,
2024